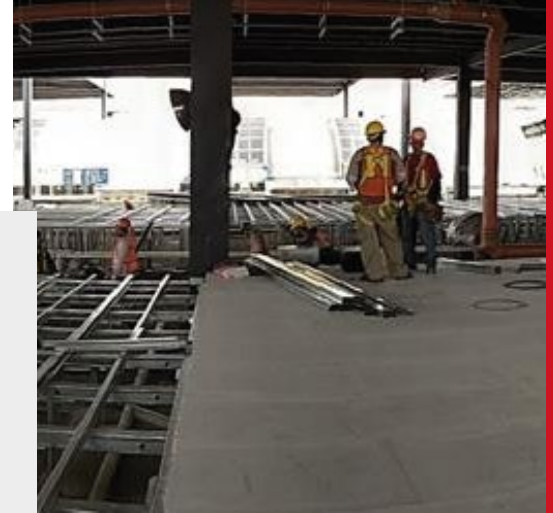


# FP FLOOR PANEL

FLOOR PANEL HAS AN INTERNAL STEEL MESH DESIGNED IN ACCORDANCE WITH THE RECOMMENDATIONS OF THE AMERICAN CONCRETE INSTITUTE (ACI) GUIDE FOR DESIGN & CONSTRUCTION WITH AERATED AUTOCLAVED CONCRETE PANELS.

They can be placed on any structure (masonry, wood, reinforced concrete and steel).



DATA SHEET

## SPECS

PARAMETERS	UNITS	AAC-4	AAC-5	AAC-6
Nominal Density	lb/ft <sup>3</sup>	31.2	37.2	39.9
Real Density	lb/ ft <sup>3</sup>	37.4	44.7	47.8
Compressive Strength (min)	psi	580	725	870
Thermal Conductivity	BTU·in/ft <sup>2</sup> ·h°F	0.798	0.992	1.07
Permeability	US Perm	0.13	0.11	0.07
Moisture Adsorption	% weight	7.61	6.31	3.9

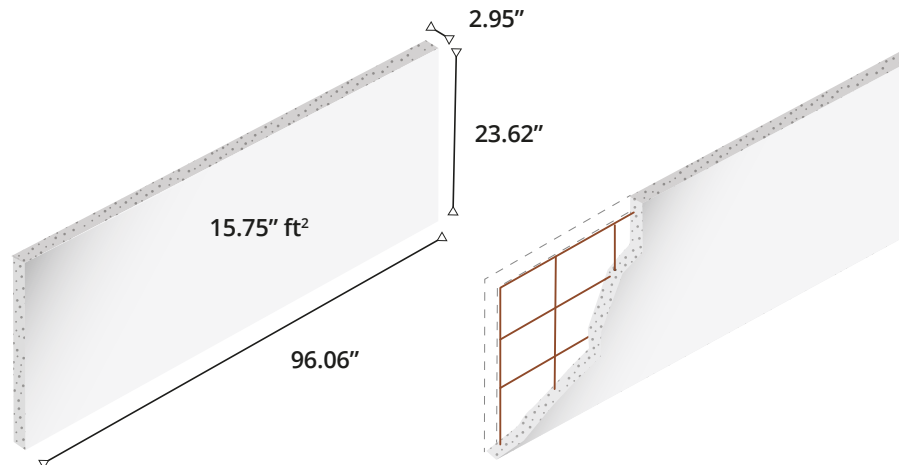


## WORKFORCE PERFORMANCE

PRODUCT PLACEMENT	PERFORMANCE
Floor Panel	800-1000 ft <sup>2</sup> /workday

Squad: Officer and assitant.

## DIMENSIONS



## MEASUREMENTS

THICKNESS (in)	HEIGHT (in)	LENGTH (in)	AREA (ft <sup>2</sup> )	WEIGHT x PIECE (lb)	WEIGHT x FT <sup>2</sup> (lb)
2.95	23.62	96.06	15.75	120.8	7.67

## TESTS

PARAMETERS	RECORDED MEASUREMENT	RESULTS
Transverse Loading Test	190 lb/ft <sup>2</sup>	Pass

### NOTES:

- Testing was conducted in accordance with the method designated in Testing Application Standard ASTM C 1452 Standard Specification for Reinforced Autoclaved Aerated Concrete Elements, with supports every 16 inches.